



## eLTER Tools workshop

6-9 Feb 2023

### Venue

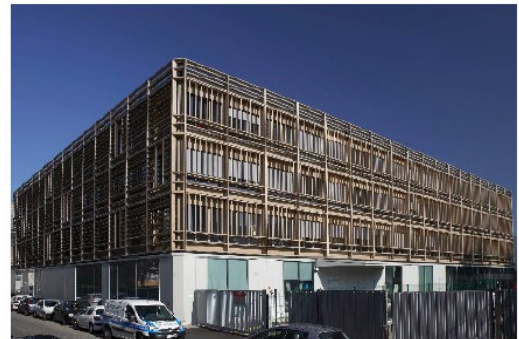
INRAE

Centre Lyon-Grenoble Auvergne-Rhône-Alpes

5 rue de la Doua - CS 20244

69625 Villeurbanne Cedex

Tél. : +33 1 (0)4 72 20 87 87



### Arrival

For public transport, see: <https://www.tcl.fr/en>

One ticket is 1.9 € (valid for 1 hr), 10 tickets 18 € and they can be purchased at the machines at tram stops and metro stations.

#### By train to Lyon/Part-Dieu

If you arrive to the train station “Part-Dieu”, you need to take tramway or metro + bus to reach INRAE. It will take around 30 min.

At the train station, take exit “Porte du Rhône (accès T1)” or “Porte des Alpes (accès T4)”.

Bus/tramway/metro stops are in front of the shopping centre Part-Dieu.

### Tram

Take tram T1 to the direction "IUT Feysine" OR Tram T4 to the direction "La Doua - Gaston Berger"

- Step out at the stop "La Doua - Gaston Berger"
- Walk Avenue Gaston Berger, take Boulevard du 11 Novembre 1918 and then Rue de la Doua. INRAE is at round-about in front of the Hôtel Ibis Styles

### Metro+ bus

Take métro B to the direction "Charpennes"

- Step out at "Charpennes/Charles Hernu"
- Take bus C17 to the direction "Porte des Alpes"
- Step out at "Colin"
- Continue rue de la Doua until INRAE

### By train to Lyon/Perrache - métro + bus

If you arrive to the train station "Perrache", you need to take metro and walk / take a bus to reach INRAE. It will take around 30 min.

Take metro A, direction "Vaulx en Velin - La Soie"

- step out at "Republique Villeurbanne"
- walk (1km), follow cours de la République and continue rue colin et rue de la Doua

OR

- step out at "Charpennes - Charles Hernu"
- take bus C17, direction Laurent Bonnevey
- Step out at "Colin"
- Continue on rue de la Doua until INRAE.

### By airplane to St Exupéry

From the airport St Exupéry you need to take a shuttle bus, and then tram or metro+ bus to arrive to INRAE. In total, it will be around - navette, puis tramway ou métro + bus.

Take a shuttle bus ("navette") [Rhônexpress](#) to Lyon (about 30 minutes). One way is 15.20 € and 26.70 €.

- Step out at "Vaulx-en-Velin la Soie"

Take metro A, direction Perrache

- step out at "Republique Villeurbanne"
- walk (1km), follow cours de la République and continue rue colin et rue de la Doua

OR

- step out at "Charpennes - Charles Hernu"
- take bus C17, direction Laurent Bonnevey
- Step out at "Colin"
- Continue on rue de la Doua until INRAE.

## Hotels near the venue:

Hôtel IBIS STYLES Lyon-Villeurbanne (en face du site)  
130 Boulevard du 11 Novembre 1918 - 69100 VILLEURBANNE  
Tél : +33 (0)4 78 89 95 95 - [website](#)

Hôtel ARIANA Lyon-Villeurbanne  
163 Cours Emile Zola - 69100 Villeurbanne  
Tél. : +33 (0)4 78 85 32 33 - [website](#)

Hôtel MERCURE Lyon-Charpennes  
7 place Charles Hernu - 69100 Villeurbanne  
Tél : +33 (0)4 72 44 46 46 - [website](#) web \*

Bed & breakfast LYON CITY HOME'S  
48 rue Descartes - 69100 Villeurbanne  
Tél. +33 (0)4 37 24 97 29 - site web \*

Hôtel DES CONGRES  
Place Rivière - 69100 Villeurbanne  
Tél. +33 (0)4 72 69 16 16 - [website](#)